
GAME ELF

(VERTICAL)

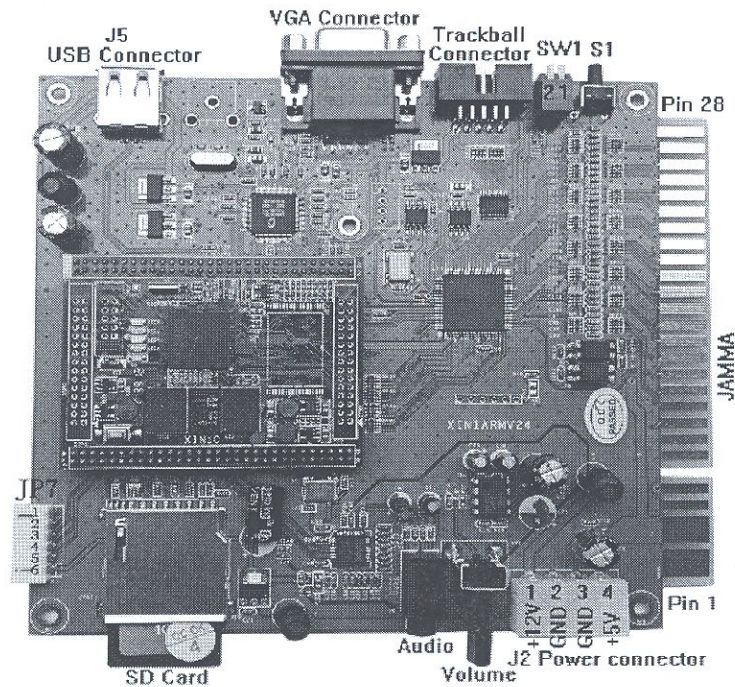
SYSTEM USER MANUAL

In order to understand the function of this system completely, please have a through reading of this manual

Contents

1. Connector Instruction-----	1
2. Operation instruction-----	2
3. System Settings Configuration-----	3
3.1 I/O Test-----	4
3.2 Factory default(Upright) -----	4
3.3 Factory default Cocktail) -----	4
3.4 Show Serial Number-----	4
3.5 Game Setting-----	4
3.6 Coin Setting-----	7
4. Edit game list-----	7
5. Single game setting and operation-----	9
6. Game difficulty and lives setting-----	10
7. Game configuration settings-----	11
8. S1 button function-----	13
9. Instruction for Home mode-----	13
10. JAMMA wire map-----	15
Attachment: Game List	

1. Connector Instruction:

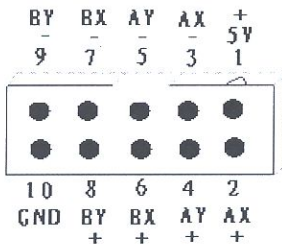


(Figure 1, Game board instruction)

CAUTION: The function of JAMMA connector power and J2 power is same; do not use them together that would destroy game board.

Trackball connection

J6 Trackball Connector



Trackball 6P Connector

- | | | | |
|---|-------------|----|-----|
| 1 | Black | —— | GND |
| 2 | light green | —— | Y+ |
| 3 | yellow | —— | Y- |
| 4 | purple | —— | X- |
| 5 | Green | —— | X+ |
| 6 | Red | —— | +5V |

Please connect the trackball 1P (A) and 2P (B) to J6 connector accordingly

Remark: The picture of user menu only for reference, any difference, please refers to the products.

2. Operation instruction

Connect the game board and switch on the machine power, after the logo of the “GAME ELF” appear, enter game list menu (about 20s-40s) as the figure 2.



(Figure 2)

● **Caution:** press 1P-C button to check the instruction.

- 1) Insert coins first and select game. (No needs to insert coin for Free play or free browse)
- 2) Select game by moving 1P joystick up or down, and left or right moving is to view game list.
- 3) Press 1P- START button to enter game.
- 4) If **Coin recycling** is set to “No”, after entering the game, all coins the player insert will be inserted into the game automatically. If **Coin recycling** is set to “Yes”, Press 1P START button for 5 seconds or press 1P D button for 3 seconds to pop up menu, and select “continue” to insert coins.
- 5) All games on Cocktail mode and some games on Upright mode

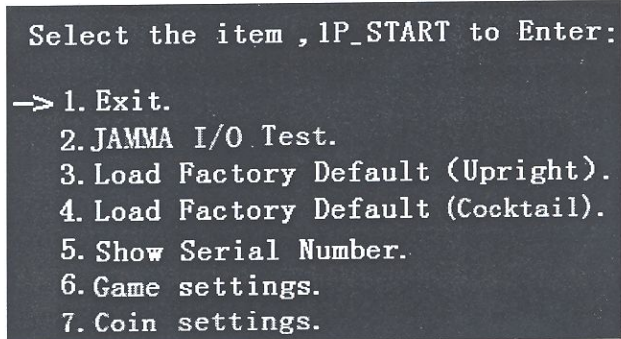
Remark: The picture of user menu only for reference, any difference, please refers to the products.

need 2 coins (or more coins) and press 2P-START button first to enable 2 players mode. If **Coin recycling** is setted to “Yes”, for these games please press 2P-START to add coins. (about **horizontal version**, see games with“ * ”in the game list.)

- 6) Press 1P-START button for 5 seconds or press 1P-D button for 3 seconds to pop up menu, and select “exit” to return to the game list (as figure 2). Press 1P-Start for 5 seconds to return directly game list when it's in game loading process.

3. System Settings Configuration

- Switch on the machine power, when the string “Press S1 to setup” appear, press S1 button to enter the system Settings menu (see the below figure 3)..



(Figure 3)

- Select item by moving 1P joystick up or down and press 1P-START to enter.
- According to the screen display prompts, perform the operation.
- Select “Exit” to quit and re-enter to the game list(as figure 2).

Remark: The picture of user menu only for reference, any difference, please refers to the products.

3.1 I/O Test

Check input/output buttons function is ok or no.(It is invalid for family mode.)

3.2 Factory default(Upright)

According to the screen display prompts, perform the operation step by step. All game configurations is returned to factory configuration and loaded of Upright mode.

3.3 Factory default(Cocktail)

According to the screen display prompts, perform the operation step by step. All vertical version of games are loaded of Cocktail mode.

3.4 Show Serial Number

This serial number is only marked number, we suggest that our customers note this number and be convenient for getting service in future.

3.5 Game Setting

- On the system menu (as figure 3), select item “6.Game Settings” to enter the games setting menu(as figure 4).

```
Game settings:
  1. Display Mode:  VGA (switch 1 on game board)
-> 2. System Mode:  Normal play
  3. Flip Screen:   OFF (switch 2 on game board)
  4. Free Play:     OFF
  5. Game Mode:     All games
  6. Free Browse:   ON
  7. Stop Timer :   OFF
  8. Music :        OFF

1P_C --- change.
```

(Figure 4)

- Moving 1P joystick up or down to choose item, then 1P-C modify item.
- SW1 switch on game board adjust two items which are “Display Mode” and “Flip screen”.
- After finishing modification, press 1P-Start to save setting(as figure 5),then press 1P-A to return system menu(as figure 3). Select "Exit" to exit, the new configuration is valid after system automatically restarts.

```
Saving...
Done. 1P_A to continue.
```

(Figure 5)

3.5.1 Display Mode

The game board supports VGA and CGA display mode, its setting steps as below:

- 1) Adjust PIN 1(DIP switch SW1 on game board) to "ON" status, turn on the power, it shows the VGA display mode.
- 2) Adjust PIN 1(DIP switch SW1 on game board) to "OFF" status,

Remark: The picture of user menu only for reference, any difference, please refers to the products.

turn on the power, it shows the CGA display mode.

- 3) Regardless of the setting of CGA or VGA mode, VGA port can normally output.

Before power is turned on, adjust PIN 2(DIP switch SW1 on game board) to "ON" status, VGA port output resolution is 800x600; when it's "OFF" status, its resolution is 1024x768.

▲ Note: <For SW1 Switch> Before turn on power, its resolution is valid for adjusting PIN 2(DIP switch SW1 on game board). After open the machine, it adjusts to Screen Revolve function.

Caution: After power on, when the system is booting process (it means: before entering the game list interface), do not adjust any one PIN of SW1 DIP switch. Avoid affecting the normal operation!

3.5.2 Flip screen

ON: Open the function--The game screen is rotated 180 degrees.

OFF: Close the function--The game screen is rotated 180 degrees.

Its setting steps as below: After turn on power, adjust PIN 2(DIP switch SW1 on game board) to "ON" status, the game screen is rotated 180 degrees; adjust PIN 2(DIP switch SW1 on game board) to "OFF" status, the game screen isn't rotated 180 degrees.

▲ 3.5.3 System Mode

Edit game list/Game difficult/Lives setting/Game configuration need to enter "Config/Edit Mode". If you don't need to adjust these items, please adjust to "Game Mode (Normal play mode)" for improving system stability.

3.6 Coin Setting

On the system menu (as figure 3), select item “7.Coin setting” to enter Coin setting menu(as figure 6).

```
Coin settings:
->1. Coin   Mode : 1 Coin 1 Credit
    2. Coin recycling : No

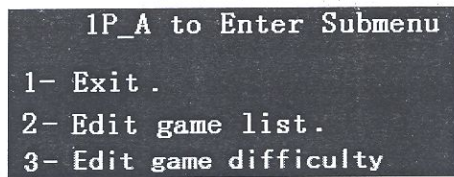
1P_C --- change.
1P_START --- save settings.
1P_A --- quit.
```

(Figure 6)

- Moving 1P joystick up or down to select item, then use 1P-C modify the item.
 - 1) **Coin mode:** to modify all games' coin setting.
 - 2) **Coin recycling:** Select Coin recycling to “Yes” or “No”.
 - “Yes”: Coins which don't be inserted into game can be returned to the player after quitting the game.
 - “No”: All coins will be inserted into the game, so no coins can be returned to the player after quitting the game.
- Press 1P-START button after finishing the setting and follow the instruction to save.

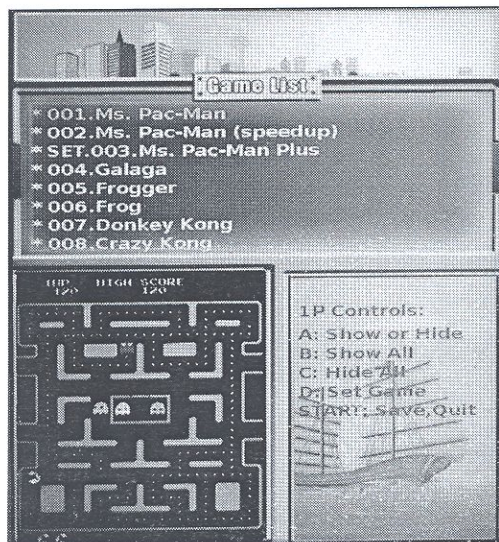
4.Edit game list

- 1) Enter Game Setting interface(as figure 4), set System Mode to Config/Edit mode, then save and quit the system setting. Enter the Game edit interface(as figure 7). (On the Config/Edit mode, press S1 button on the game list menu (figure 2) to enter the below menu also)



(Figure 7)

2) Moving 1P joystick up or down to select “2-Edit game list” and enter the “Edit game list” menu(as figure 8).



(Figure 8)

3) The item “*” means to show game list, no item “*” that means to hide game list.

- Select game list by moving 1P joystick (up or down to choose game, left or right to view game menu) and press 1P-A to decide to show or hide the selected game.
- Press 1P-B button to show all games, press 1P-C button to hide all games.

4) After the game list edition is finished, press 1P-START button to

enter the save menu (as figure 9). Please follow the instruction to save. Then return to interface (as figure 7), quit “enter game list interface” (as figure 2).

Confirm your selection ?

1P-A: Save and quit.

1P-B: Cancel.

1P-C: Quit without saving.

(Figure 9)

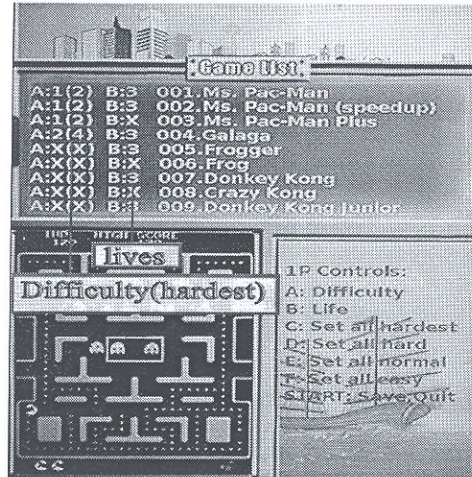
- 5) After editing the game list, please enter Game setting again (as figure 4), set System mode to Game Mode (Normal play mode) and save it. The game will be started in normal after the system reboot(as figure 2)

5.Single game setting and operation

- 1) Please refer to “Edit game list” as above, and enter the edit game list menu (as figure 8).
 - 2) Moving 1P joystick up or down to select game, press 1P-D button to set. If it shows “SET” in front of game title you selected, that means the setting is successful.
 - 3) Enter Game settings menu (as figure 4), set the **Game mode** to Single mode, set **System mode** to “Normal play” mode and save it. The Single mode will be started after re-entering the game.
- ▲ If set game which is on the horizontal version, please set “Default run” item to horizontal version. If it’s vertical version game, please set it to vertical version.

6. Game difficulty and lives setting

- 1) Enter DIP Switch Setting menu (as figure 4), set System mode to Config/Edit mode, save and then enter the menu(as figure 7). Select the item “3.Edit game difficulty” to enter the menu as below(as figure 10).



(Figure 10)

- 1P joystick: to select the game that needs to be changed.
 - 1P-A button: to adjust the game difficulty.
 - 1P-B button: to adjust the lives
 - 1P-C button: to set all games to hardest.
 - 1P-D button: to set all games to hard.
 - 1P-E button: to set all games to normal.
 - 1P-F button: to set all games to easy.
- ▲ **Notice:** when some games' difficulty show as "x(x)" or lives show as "x", it means this game has no difficulty and no lives to adjust, or it means this game doesn't support to adjust game difficulty and lives. If it is the 2nd option, please enter the game and set the game configuration specifically. (See the detail setting on "Game configuration settings").

- After finishing it, press 1P-START button and follow the instruction to save. Press 1P-A button to save the modified games and press 1P-D button to force to save all games. Saving all games will cost a long time.
- Set the System mode to “Normal play” mode and enter the game list menu (as figure 2) to start game as usual.

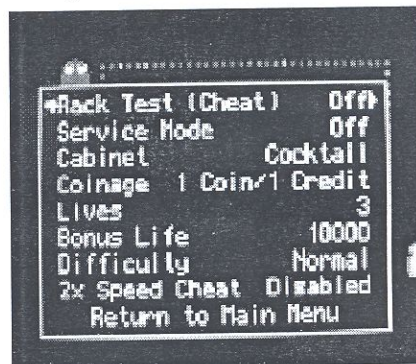
7. Game configuration settings

Way 1 for Game configuration settings:

- 1) Enter the DIP Switch settings menu (as figure 4), set **System mode** to “Config/Edit” mode, save and quit the system settings menu, then enter the game list menu (figure 2).
- 2) Moving 1P joystick up or down to select the game you want to change, press 1P-Start button to start game and enter the game configuration editor menu(as figure 11).



(Figure 11)



(Figure 12)

- 3) Move 1P joystick to select “Dip Switches” and press 1P-A button to enter the setting menu(as figure 12). (This operation is invalid for some games, please refer to way 2.)
- 4) Select option by moving 1P joystick up or down, and press 1P-C

Remark: The picture of user menu only for reference, any difference, please refers to the products.

or D button to adjust.

- 5) Select "Return to main menu" to quit the setting menu after setting (as figure 11), and select "Exit game" to back game list (as figure 2). Restart the game, then new settings is valid.
- 6) Please go on to set other games if you need. If not, please set System mode to "Normal play" mode and save it. Re-enter the game list and the game will be started in normal mode.

Way 2 for Game configuration settings (Original configuration adjustments):

- 1) Refer to Way 1, enter the game configuration editor menu(as figure 11), and select the item "Enter Service Mode (if have) " to enter game's original setting menu (when some games select this item, it's need to quit game first and enter again, then enter the game configuration setting menu).
- 2) Follow the instructions of the game configuration setting menu to modify game configuration and save it.
- 3) After finishing it, press S1 to show the game configuration setting menu, select "Exit game" and return to game list menu (as figure 2). Enter the game again and the new configuration is valid.

Caution: The game willl enter setting menu after starting if "service mode" is set to ON.
Please refer to way 1,set "Service mode"to "OFF".

- 4) Set the System Mode to "Game Mode" and enter the normal playing mode.

8. S1 button function

- 1) System setting button, press S1 button to enter the system setting menu when the screen show "GAME ELF" logo (as figure 3).
- 2) On the Normal play mode, press S1 button to quit and return to the game list (as figure 2).
- 3) On the Config/Edit mode, press S1 button in the game to pop up or hide the configuration setting menu (as figure 11). Press S1 button on the game list menu (as figure 2), and enter the Edit game list interface.

9. Instruction for Home mode

1) PS2 game controller

Plug-in J5 USB port of game console (as figure 1-1) to PS2 game controller. Switch on the power, after the game controller is detected, the system will enter automatically Home mode.

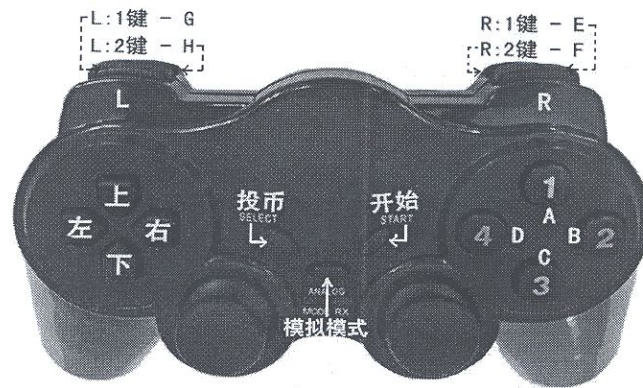
For One player: connect one of PS2 game controller to J5 USB port of game console.

For Two players: add one USB 2.0 hub, connect two PS2 game controllers to hub, and then connect hub USB port to J5 socket of game console.

2) Free play

No free play on the home mode. Press SELECT to insert coins, and then press START to begin game. Set the game configuration settings to get free playing is available for most games. Please refer to page 11 to get more information.

3) Define 1P PS2 game controller as below.



(Figure 13)

Press IP-G and IP-H bottom at the same time to quit game.(as figure 2)

4) Sleep mode

The idle PS2 game controller will enter sleep mode when power is on.

Caution: When the controller is in sleep mode, the power switch of controller is invalid, you must press START button to wake it up, return to normal working state.

10. JAMMA wire map

JAMMA WIRE PAP			
Part side		Soild side	
Definition	PIN	PIN	Definition
GND	1	1	GND
GND	2	2	GND
+5V	3	3	+5V
+5V	4	4	+5V
/	5	5	/
+12V	6	6	+12V
/	7	7	/
/	8	8	/
JMA9	9	9	JMB9
SPEAKER+	10	10	SPEAKER-
JMA11	11	11	JMB11
VIDEO R	12	12	VIDEO G
VIDEO B	13	13	VIDEO SYNC
GND	14	14	SERVICE
TEST	15	15	JMB15
1P-COIN	16	16	2P-COIN
1P-START	17	17	2P-START
1P-UP	18	18	2P-UP
1P-DOWN	19	19	2P-DOWN
1P-LEFT	20	20	2P-LEFT
1P-RIGHT	21	21	2P-RIGHT
1P-A	22	22	2P-A
1P-B	23	23	2P-B
1P-C	24	24	2P-C
1P-D	25	25	2P-D
1P-E	26	26	2P-E
1P-F	27	27	2P-F
GND	28	28	GND

▲ **Caution: Do not connect the PIN27 of JAMMA port to ground lead, it will affect the game's playing.**

Remark: The picture of user menu only for reference, any difference, please refers to the products.

Special note

1. This price is just for the computer hardware equipment.
2. Customers get the software by their own (including the purchase from the software provider or download free software from related web).
3. The way to get the software:
 - (1) Purchase the software from the software provider.
 - (2) Download the software from the related web.
4. Users assume all the legal consequences due to wrong download and use the software, it is unrelated with the equipment manufacturers and distributors.



GAME ELF

Game list of game elf (Vertical)

▲	001. Ms. Pac-Man	
	002. Ms. Pac-Man (speedup)	
	003. Ms. Pac-Man Plus	
	004. Galaga	
	005. Frogger	
	006. Frog	
	007. Donkey Kong	
	008. Crazy Kong	
	009. Donkey Kong Junior	
	010. Donkey Kong 3	
	011. Galaxian	
	012. Galaxian Part X	
	013. Galaxian Turbo	
	014. Dig Dug	
	015. Crush Roller	
	016. Mr. Do!	
	017. Space Invaders Part II	
	018. Super Invaders (EMAG)	
	019. Return of the Invaders	
▲	020. Super Space Invaders '91	
	021. Pac-Man	
	022. PuckMan	
	023. PuckMan (speedup)	
	024. New Puck-X	
	025. Newpuc2	
	026. Galaga 3	
	027. Gyruus	
	028. Tank Battalion	
	29. 1942	
	030. Lady Bug	
	031. Burger Time	
	032. Mappy	
	033. Centipede	
▲	034. Millipede	
	035. Jr. Pac-Man	
	036. Pengo	
	037. Son of Phoenix	
	038. Time Pilot	
	039. Super Cobra	
	040. Video Hustler	
	041. Space Panic	
	042. Space Panic (harder)	
▲	043. Super Breakout	
▲	044. Arkanoid	
	045. Super Qix	
	046. Juno First	
	047. Xevious	
	048. Mr. Do's Castle	
	049. Moon Cresta	
	050. Pinball Action	
	051. Scramble	
	052. Super Pac-Man	
	053. Bomb Jack	
	054. Shao-Lin's Road	
	055. King & Balloon	
▲	56. 1943	
	057. Van-Van Car	
	058. Pac-Man Plus	
	059. Pac & Pal	
	060. Dig Dug II	
	061. Amidar	
	062. Zaxxon	
	063. Super Zaxxon	
	064. Pooyan	
▲	065. Pleiads	
	066. Gun. Smoke	
	067. The End	
▲	068. 1943 Kai	
	069. Congo Bongo	
	070. Jumping Jack	
	071. Big Kong	
	072. Bongo	
	073. Gaplus	
	074. Ms. Pac Attack	
	075. Abscam	
	076. Ajax	
	077. Ali Baba and 40 Thieves	
▲	078. Finalizer - Super Transformation	
	079. Arabian	
	080. Armored Car	
	081. Astro Blaster	
	082. Astro Fighter	
	083. Astro Invader	
	084. Battle Lane!	
	085. Battle-Road, The	
	086. Beastie Feastie	

Game list of game elf (Vertical)

087. Bio Attack
088. Black Hole
▲ 089. Block Gal
090. Blue Print
091. Bump 'n' Jump
092. Cavelon
093. Cheeky Mouse
094. Circus Charlie
095. Commando
096. Darwin 4078
097. Defend the Terra Attack - UFO
098. Devil Fish
099. Devil Zone
100. Dingo
101. Disco No. 1
102. Dock Man
103. Dog Fight (Thunderbolt)
104. Dommy
105. Dorodon
106. Dr. Micro
107. Dr. Toppel's Adventure
108. Dream Shopper
109. Eagle
110. Eggor
▲ 111. Eight Ball Action
112. Enigma 2
113. Exciting Soccer
114. Exerion
115. Eyes
116. Fantazia
▲ 117. Labyrinth Runner
118. Fighting Roller
119. Fire Battle
120. Fire Trap
121. Fly-Boy
122. Free Kick
123. Funky Bee
▲ 124. Funky Fish
125. Funny Mouse
126. Future Spy
127. Galaxy Wars
128. Gardia
129. Ghostmuncher Galaxian

130. Go Go Mr. Yamaguchi
131. Gorkans
132. Grobda
133. Gun Dealer
134. Guzzler
135. Gyrodine
136. Hangly-Man
137. Hero in the Castle of Doom
138. High Way Race
139. Hoccer
140. Hopper Robo
141. Intrepid
142. Jack the Giantkiller
143. Joinem
144. Jolly Jogger
145. Joyman
146. Jump Coaster
147. Jungler
▲ 148. Crazy Rally
149. Kangaroo
▲ 150. Kaos
151. Kicker
152. Korosuke Roller
153. Lasso
154. Lock' n' Chase
155. Loco-Motion
156. Looping
157. Lunar Rescue
158. Mad Alien
▲ 159. VS Gong Fight
160. 800 Fathoms
161. Mighty Guy
162. Mighty Monkey
163. Mikie
164. Minky Monkey
165. Mission 660
166. Mister Viking
167. Money Money
168. Monkey Donkey
169. Monster Bash
170. Moon Alien
171. Moon Alien Part 2
172. Moonwar

Game list of game elf (Vertical)

173. Motos
174. Mouser
175. Mr. Jong
176. Mr. Kougar
177. Mr. TNT
178. Mysterious Stones
179. Naughty Boy
180. Naughty Mouse
181. Navarone
182. Net Wars
183. New Sinbad 7
184. Wild Western
185. Nibbler
186. Ninja Emaki
▲ 187. Jackal
188. Gomoku Narabe Renju
189. Nunchackun
190. Oli-Boo-Chu
191. Ozma Wars
192. Pandora's Palace
193. Strata Bowling
194. Percussor, The
195. Perestroika Girls
196. Performan
197. Phozon
198. Pickin'
199. Pinbo
200. Piranha
201. Pisces
202. Pit, The
203. Polaris
204. Pop Flamer
205. Popper
206. Power Surge
207. Pro Baseball Skill Tryout
▲ 208. City Bomber
209. Rafflesia
210. Regulus
211. Road Fighter
212. Roc'n Rope
213. Round-Up
214. Rug Rats
215. S. R. D. S. R. D. S. R. D. Mission

216. SWAT
217. Samurai Nihon-ichi
218. Satan of Saturn
219. Saturn
220. Bagman
221. Scrambled Egg
222. Senjyo
223. Shot Rider
224. Sindbad Mystery
225. Sky Base
▲ 226. Seicross
▲ 227. Space King 2
228. Space Firebird
229. Space Force
230. Space Pilot
231. Space Raider
232. Space Thunderbird
233. Speak & Rescue
234. Speed Ball
235. Springer
236. Star Force
237. Star Jacker
238. Stinger
239. Streaking
240. Super Bagman
241. Super Basketball
242. Super Doubles Tennis
243. Super Galaxians
244. Super Mouse
▲ 245. Gigas
246. Swarm
247. Syusse Oozumou
248. Tactician
▲ 249. Slither
250. Top Roller
251. Tower of Druaga
252. Traverse USA
253. Triple Punch
254. Turpin
255. Tutankham
256. UniWar S
257. Vastar
258. Vulgus

Game list of game elf (Vertical)

259. Wanted
260. Warp & Warp
261. Water Ski
262. Wiping
263. Wiz
264. Woodpecker
265. Yamato
▲ 266. Omega Fighter Special
267. Zig Zag
268. Cutie Q
269. Zodiack
270. Zzyzyzyx
▲ 271. Anteater
▲ 272. Blades of Steel
▲ 273. Bomb Bee
▲ 274. Turbo Force
▲ 275. Kuhga
▲ 276. Thundercade / Twin Formation
▲ 277. Devastators
▲ 278. Aero Fighters
279. Sonic Wings
▲ 280. Tetris(1P)
▲ 281. Truxton / Tatsujin
▲ 282. Out Zone
▲ 283. Lightning Fighters
▲ 284. Super Contra
▲ 285. Rally Bike
▲ 286. Gang Busters
▲ 287. Mercs
▲ 288. Time Scanner
▲ 289. Varth - Operation Thunderstorm
290. Argus
▲ 291. Image Fight
292. Youma Ninpou Chou
▲ 293. Blast Off
294. Galaga (fast shoot)
▲ 295. Truxton II / Tatsujin II
▲ 296. Mahou Daisakusen
297. Zing Zing Zip
▲ 298. Armed Formation
▲ 299. Commando
300. Dragon Spirit
▲ 301. Gemini Wing

▲ 302. Sky Soldiers
▲ 303. TNK III
▲ 304. Terra Cresta
▲ 305. Air Duel
▲ 306. Blazer
▲ 307. Gals Panic
▲ 308. Quester
▲ 309. Caliber 50
▲ 310. DownTown
▲ 311. Dyger
▲ 312. Tiger Heli
▲ 313. Slap Fight (Japan)
▲ 314. Slap Fight (English)
▲ 315. Ikari Warriors
▲ 316. Ashura Blaster
▲ 317. Master of Weapon
▲ 318. Gun & Frontier
319. Fighting Hawk
320. Twin Cobra
321. Flying Shark
322. Time Soldiers
323. Battlantis
▲ 324. The Hustler
▲ 325. War of Aero
▲ 326. Galaga '88
▲ 327. Assault
▲ 328. Dragon Saber
▲ 329. Cosmo Gang the Video
▲ 330. Sky Fox
▲ 331. SAR - Search And Rescue
▲ 332. Tail to Nose - Great Championship
▲ 333. Super Formula
▲ 334. Final Star Force
335. Galaga '84
336. Dangar - Ufo Robo
▲ 337. Last Duel
338. Mad Gear
▲ 339. Alley Master
▲ 340. Legendary Wings
341. Wrestle War
342. Block Block
343. Rompers
▲ 344. Bowl-O-Rama

Game list of game elf (Vertical)

▲	345. Twin Eagle
▲	346. Victory Road
▲	347. Extermination
	348. Plus Alpha
▲	349. Bells & Whistles
▲	350. Kageki
▲	351. 1941 - Counter Attack
	352. Alpine Ski
▲	353. APB - All Points Bulletin
▲	354. Carnival
▲	355. Electric Yo-Yo, The
▲	356. fastfred
▲	357. Front Line
	358. Green Beret
▲	359. Guerrilla War
▲	360. Journey (1P)
▲	361. Joust 2
	362. Karate Champ
▲	363. Kick
▲	364. Krull
▲	365. Lost Tomb (easy)
▲	366. Up'n Down
▲	367. Mad Planets
▲	368. Mega Zone
▲	369. Phoenix
	370. Q*bert
▲	371. Q*bert's Qubes
▲	372. Qix
▲	373. Qix 2
▲	374. Ring King
	375. Satan's Hollow
▲	376. Sinistar
	377. Solar Fox
▲	378. Space Dungeon
	379. Space Invaders

▲	380. Speed Rumbler, The
▲	381. Tac/Scan
▲	382. Tag Team Wrestling
▲	383. Tempest
▲	384. 19XX: The War Against Destiny
▲	385. Time Pilot '84
▲	386. Toobin'
▲	387. Tournament Arkanoid
▲	388. Tron
▲	389. Colony 7
▲	390. Play Girls 2
▲	391. Play Girls
▲	392. Bull Fighter
	393. Evil Stone
	394. Trick Trap
	395. Arkanoid - Revenge of DOH
▲	396. Gorf
▲	397. Arbalester
▲	398. 1945k III
▲	399. DonPachi
▲	400. DoDonPachi
▲	401. Dimahoo
▲	402. Fantasia
▲	403. Fantasy '95
▲	404. Gals Panic
▲	405. New Fantasia
▲	406. Super Model
▲	407. Guwange
▲	408. Battle Bakraid
▲	409. Dangun Feveron
▲	410. ESP Ra. De.
▲	411. Spiders
▲	412. Raiden